



RADIAL TYPE CHOKE INDUCTOR CKOCR Series

工字电感 CKOCR 系列

● FEATURES 特性

Low cost ,Wide range of inductance , High reliability

低损耗，感量高，高可靠性。

● APPLICATIONS 用途

TVs and Audio equipment 电视和音响设备

Telecommunication devices 电信设备

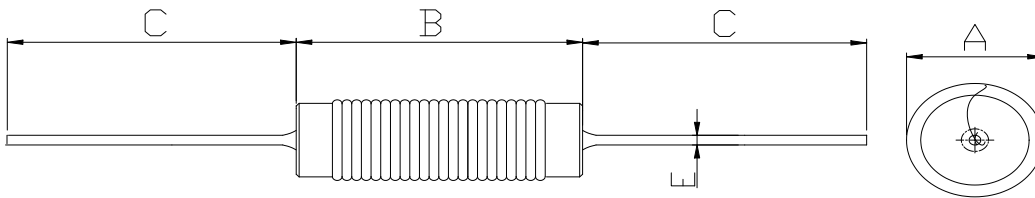
RF filters 射频滤波器



● PART NUMBERING SYSTEM 品名系统



● SHAPES AND DIMENSIONS 外形尺寸 (Unit:mm)



TYPE(型号)	A	B	C	E
CKOCR0310	5.0Max	13.0Max	25Ref	0.55±0.1
CKOCR0408	6.0Max	11.0Max	25Ref	0.55±0.1
CKOCR0410	6.0Max	13.0Max	25Ref	0.55±0.1

● SPECIFICATION TABLE 规格特性表
CKOCR0310

PART NUMBER 品名	INDUCTANCE (μ H) 电感值	DCR (Max.) (Ω) 直流电阻	IDC (Max.) (A) 额定电流	TEST FREQUENCY 测试频率
CKOCR0310-3.3uH/M	3.3 \pm 20%	0.23	0.90	100kHz,0.25V
CKOCR0310-4.7uH/M	4.7 \pm 20%	0.50	0.70	100kHz,0.25V
CKOCR0310-6.8uH/M	6.8 \pm 20%	0.60	0.55	100kHz,0.25V
CKOCR0310-8.2uH/M	8.2 \pm 20%	0.70	0.50	100kHz,0.25V
CKOCR0310-10uH/K	10 \pm 10%	0.80	0.45	1kHz,0.25V

CKOCR0408

PART NUMBER 品名	INDUCTANCE (μ H) 电感值	DCR (Max.) (Ω) 直流电阻	IDC (Max.) (A) 额定电流	TEST FREQUENCY 测试频率
CKOCR0408-15uH/K	15 \pm 10%	0.83	0.50	1kHz,0.25V
CKOCR0408-22uH/K	22 \pm 10%	1.05	0.40	1kHz,0.25V
CKOCR0408-33uH/K	33 \pm 10%	1.30	0.30	1kHz,0.25V

CKOCR0410

PART NUMBER 品名	INDUCTANCE (μ H) 电感值	DCR (Max.) (Ω) 直流电阻	IDC (Max.) (A) 额定电流	TEST FREQUENCY 测试频率
CKOCR0410-15uH/K	15 \pm 10%	0.78	0.80	1kHz,0.25V
CKOCR0410-22uH/K	22 \pm 10%	0.95	0.60	1kHz,0.25V
CKOCR0410-33uH/K	33 \pm 10%	1.20	0.45	1kHz,0.25V
CKOCR0410-47uH/K	47 \pm 10%	1.60	0.38	1kHz,0.25V
CKOCR0410-56uH/K	56 \pm 10%	1.75	0.35	1kHz,0.25V
CKOCR0410-68uH/K	68 \pm 10%	2.50	0.32	1kHz,0.25V
CKOCR0410-82uH/K	82 \pm 10%	3.50	0.27	1kHz,0.25V

Remark: 1. All test data is reference to 25 $^{\circ}$ C ambient.

2. IDC: DC current at which the inductance drops approximate 20% from its value without current;

3. Operating Temperature : -25 $^{\circ}$ C ~ +85 $^{\circ}$ C(Including self - temperature rise)



RADIAL TYPE CHOKE INDUCTOR CKOC Series

工字电感 CKOC 系列

● FEATURES 特性

Low cost ,Wide range of inductance , High reliability

低损耗，感量高，高可靠性。

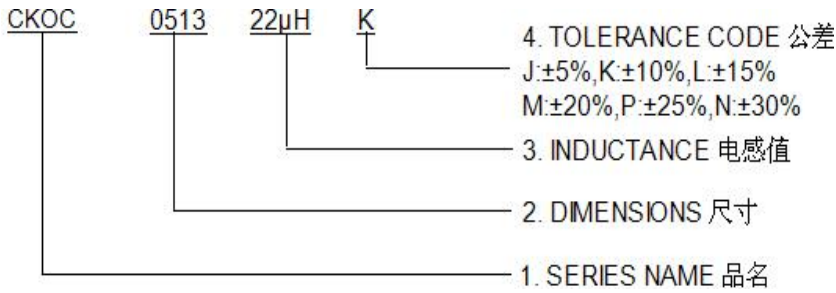
● APPLICATIONS 用途

TVs and Audio equipment 电视和音响设备

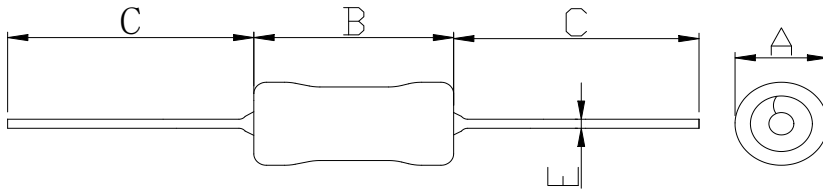
Telecommunication devices 电信设备

RF filters 射频滤波器

● PART NUMBERING SYSTEM 品名系统



● SHAPES AND DIMENSIONS 外形尺寸 (Unit:mm)



TYPE(型号)	A	B	C	E
CKOC0513	7.0Max	16.0Max	25Ref	0.8±0.1
CKOC1019	12Max	23.0Max	25Ref	0.8±0.1

● SPECIFICATION TABLE 规格特性表
CKOC0513

PART NUMBER 品名	INDUCTANCE (μ H) 电感值	DCR (Max.) (Ω) 直流电阻	IDC (Max.) (A) 额定电流	TEST FREQUENCY 测试频率
CKOC0513-6.8uH/M	6.8 \pm 20%	0.06	0.80	100kHz,0.25V
CKOC0513-8.2uH/M	8.2 \pm 20%	0.08	0.43	100kHz,0.25V
CKOC0513-10uH/K	10 \pm 10%	0.09	0.40	1kHz,0.25V
CKOC0513-15uH/K	15 \pm 10%	0.11	0.36	1kHz,0.25V
CKOC0513-22uH/K	22 \pm 10%	0.13	0.33	1kHz,0.25V

CKOC1019

PART NUMBER 品名	INDUCTANCE (μ H) 电感值	DCR (Max.) (Ω) 直流电阻	IDC (Max.) (A) 额定电流	TEST FREQUENCY 测试频率
CKOC1019-10uH/K	10 \pm 10%	0.033	1.70	1kHz,0.25V
CKOC1019-15uH/K	15 \pm 10%	0.040	1.40	1kHz,0.25V
CKOC1019-22uH/K	22 \pm 10%	0.050	1.20	1kHz,0.25V
CKOC1019-33uH/K	33 \pm 10%	0.075	0.95	1kHz,0.25V
CKOC1019-47uH/K	47 \pm 10%	0.109	0.83	1kHz,0.25V
CKOC1019-68uH/K	68 \pm 10%	0.140	0.70	1kHz,0.25V
CKOC1019-100uH/K	100 \pm 10%	0.208	0.55	1kHz,0.25V
CKOC1019-120uH/K	120 \pm 10%	0.283	0.50	1kHz,0.25V
CKOC1019-150uH/K	150 \pm 10%	0.340	0.45	1kHz,0.25V
CKOC1019-180uH/K	180 \pm 10%	0.362	0.45	1kHz,0.25V
CKOC1019-220uH/K	220 \pm 10%	0.430	0.35	1kHz,0.25V
CKOC1019-270uH/K	270 \pm 10%	0.557	0.30	1kHz,0.25V
CKOC1019-330uH/K	330 \pm 10%	0.665	0.30	1kHz,0.25V
CKOC1019-390uH/K	390 \pm 10%	0.772	0.25	1kHz,0.25V
CKOC1019-470uH/K	470 \pm 10%	1.150	0.25	1kHz,0.25V
CKOC1019-560uH/K	560 \pm 10%	1.270	0.25	1kHz,0.25V
CKOC1019-680uH/K	680 \pm 10%	1.610	0.20	1kHz,0.25V
CKOC1019-820uH/K	820 \pm 10%	1.960	0.20	1kHz,0.25V
CKOC1019-1mH/K	1000 \pm 10%	2.300	0.18	1kHz,0.25V
CKOC1019-1.2mH/K	1200 \pm 10%	2.650	0.17	1kHz,0.25V
CKOC1019-1.5mH/K	1500 \pm 10%	3.400	0.14	1kHz,0.25V
CKOC1019-1.8mH/K	1800 \pm 10%	4.030	0.13	1kHz,0.25V
CKOC1019-2.2mH/K	2200 \pm 10%	4.380	0.12	1kHz,0.25V
CKOC1019-2.7mH/K	2700 \pm 10%	5.400	0.10	1kHz,0.25V
CKOC1019-3.3mH/K	3300 \pm 10%	6.560	0.095	1kHz,0.25V

Remark: 1. All test data is reference to 25 $^{\circ}$ C ambient.

2. IDC: DC current at which the inductance drops approximate 20% from its value without current;

3. Operating Temperature : -25 $^{\circ}$ C ~ +85 $^{\circ}$ C(Including self - temperature rise)